



3 Bedroom Option

- 1. BED-1 = 20'-10"x14'-10"
- 2. BED-2 = 17'-9"x16'-0"
- 3. BED-3 = 16'-5"x16'-0"
- 4. S. BED = 6'-3"x7'-4"
- 5. TOILET-1 = 11'-7"x7'-2"
- 6. TOILET-2 = 11'-2"x6'-5"
- 7. TOILET-3 = 10'-7"x6'-5"
- 8. KITCHEN = 13'-5"x13'-0"
- 9. CLOSET-1 = 11'-7"x7'-8"
- 10. F.LIVING & DINING = 58'-6"x21'-0"
- 11. LIVING = 28'-0"x 23'-4"
- 12. VER. = 9'-8"x20'-0"





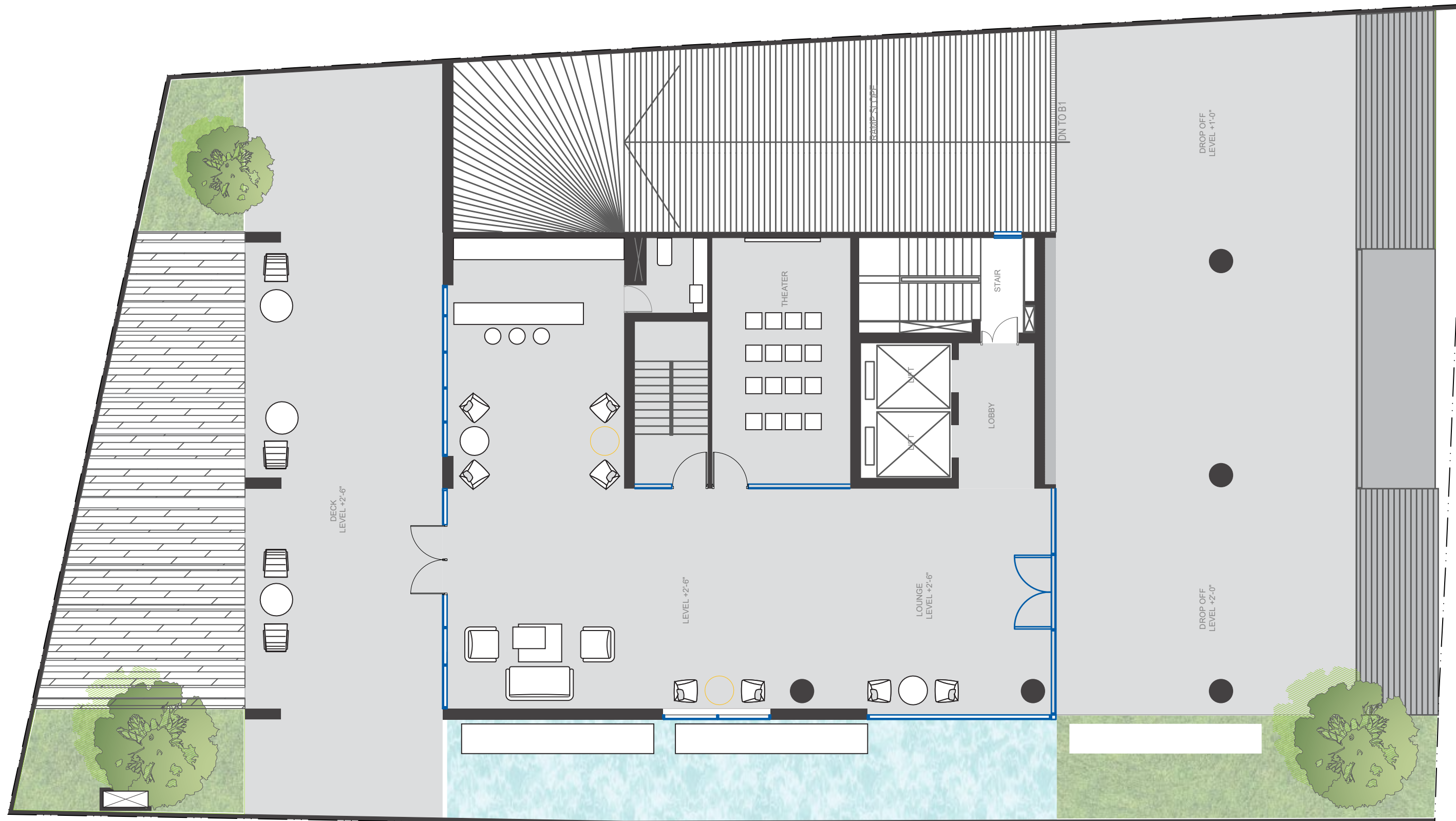
4 Bedroom Option



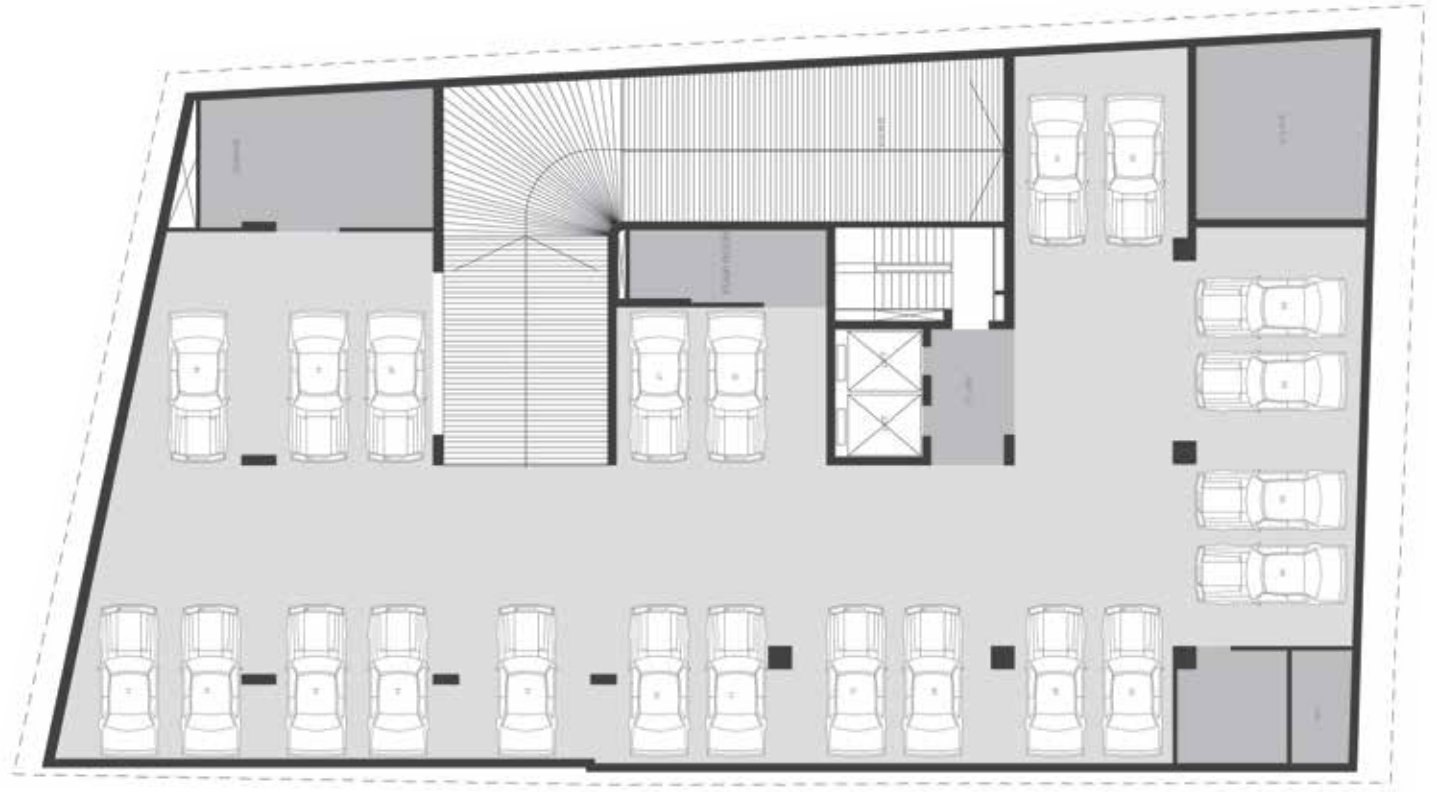
- 1. BED-1 = 20'-10"x14'-10"
- 2. BED-2 = 17'-9"x16'-0"
- 3. BED-3 = 16'-5"x16'-0"
- 4. BED-4 = 13'-7"x14'-10"
- 5. S. BED = 6'-3"x7'-4"
- 6. TOILET-1 = 10'-6"x7'-2"
- 7. TOILET-2 = 11'-2"x6'-5"
- 8. TOILET-3 = 10'-7"x6'-5"
- 9. TOILET-4 = 9'-6"x5'-6"
- 10. KITCHEN = 13'-5"x13'-0"
- 11. CLOSET-1 = 10'-6"x7'-8"
- 12. F.LIVING & DINING = 39'-9"x21'-0"
- 13. LIVING = 28'-0"x 23'-4"
- 14. POWDER ROOM = 5'-4"x5'-6"
- 15. VER. = 9'-8"x20'-0"

Ground Floor

- 1. LOUNGE = 20'-5" x 56'-0"
- 2. DECK = 69'-2" x 18'-4"
- 3. THEATER = 23'-2" x 12'-9"
- 4. TOILET 1 = 6'-11" X 7'-9"
- 5. DROP OFF = 64'-0" x 27'-10"



Basement 1



Basement 2



Rooftop

